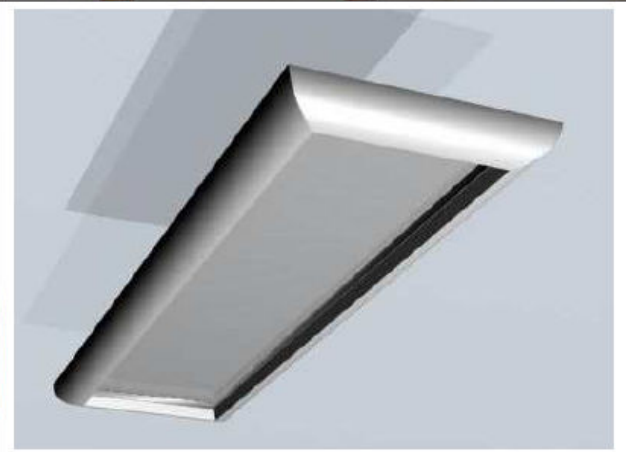


CERAHEAT

ceramic radiant heater



HIGH QUALITY - FINNISH DESIGN

High technology and modern design of the Ceraheat radiant heater provides a perfect solution to a variety of heating needs.

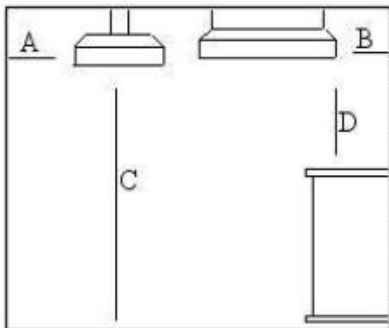
Ceraheat heating panels can be used to in outside decks, sunrooms, balconies, terraces, entrance ways and also in bathrooms. Ceraheat provides comfortable heat and saves energy.

Heaters are available with different coloured and styled frames: from basic coloured grey frames to the luxury marble and wood designed frames.

When your requirements for the heaters are high and your balcon and sunrooms are gorgeos furnished Ceraheat is the best choice to your beautiful space.



RECOMMENDED MINIMUM DISTANCES



- A.... 150 mm (long side)
- B.... 150 mm (short side)
- C..... 1800 mm (to floor)
- D.....1000 mm (to inflammable material)
distance to fixed workbench 60 “.

IMPORTANT !!!

Heater must install so high in to the wall or in to the ceiling that anybody can not reach to touch the very hot heating element.



Models:	CERAHEAT 750	CERAHEAT 1000
wattage	750 W	1000 W
supply voltage	230 V	230 V
nominal current	3,3 A	4,3 A
degree of protection		
against ingress of water	IP 54	IP 54
weight	6 kg	7,5 kg
length	1015	1015
width	300 mm	380 mm
height	80 mm	80 mm
Max. temperature of heating elements		
All models	225 °C	225 °C
Max. temperature of the backround fitting part +60 °C		



Prices	EUR	excl VAT	Basic grey	Painted	Marble/wood
750 W			209	249	325
1000 W			235	269	349